

Kansas Biofuel Facilities: Guide to Planning, Funding, and Regulatory Process

Building a renewable fuel facility requires careful planning and compliance with a number of local, state and federal statutes and rules and regulations. A listing of state government contacts are listed below. Please see the attached flow chart for a suggested order to make these contacts:

PLANNING, LOANS and MATCHING FUNDS

Kansas Alternative Energy Working Group

For more information on the Kansas Alternative Energy Working Group and questions about the overall regulatory process, contact the Kansas Department of Commerce's Rural Development Division.

Contact: Corey Mohn at 785-296-3034 or cmohn@kansascommerce.com.

Funding Assistance

To learn more about the Agriculture Value Added Loan program, funding for feasibility studies, business plans, and equity drives, or Economic Development Block Grants through the Community Development Block Grant program, contact the Kansas Department of Commerce's Rural Development Division.

Contact: Mari Tucker at 785-296-6080 or mtucker@kansascommerce.com.

REGULATORY ACTIONS

Above Ground Storage Tanks, Fire Protection, Life and Safety

To learn more about regulations, contact the Office of the Kansas State Fire Marshall.

Contacts: Jack Chatmon at 785-296-3401 or jack.chatmon@ksfm.ks.gov.

Stephen Fenske at 785-296-3401 or stephen.fenske@ksfm.ks.gov.

Air Quality/Emissions

To learn more about permitting requirements, contact the Kansas Department of Health and Environment, Bureau of Air and Radiation.

Contact: Terry Tavener at 785-296-1581 or ttavener@kdheks.gov.

Boiler Inspections

To learn more about the Kansas Boiler Safety Act, the Boiler Safety Program, and related regulations, contact the Kansas Department of Labor.

Contact: Steve Zink at 785-296-4386 or Steve.Zink@dol.ks.gov.

Licensing, Bonding, Motor Fuels Tax, Tax Credits

To learn more, contact the Kansas Department of Revenue.

Contact: Edie Martin at 785-296-5327 or edie_martin@kdor.state.ks.us.

Kansas Biofuel Facilities: Guide to Planning, Funding, and Regulatory Process

REGULATORY ACTIONS (cont.)

Securities Registration

To learn more about necessary registrations and filings for equity drives, contact the Kansas Office of the Securities Commissioner.

Contact: Steve Wassom at 785-296-3307 or Steve.Wassom@ksc.ks.gov.

Water and Waste Water (quality)

To learn more about permitting requirements, contact the Kansas Department of Health and Environment, Bureau of Water.

Contact: Don Carlson at 785-296-5547 or dcarlson@kdheks.gov.

Water Resource Allocation and Water Supply (quantity)

To learn more about Kansas water law and water needs for renewable fuel production, contact the Kansas Department of Agriculture's Division of Water Resources.

Contact: Ken Kopp at 785-296-3717 or Kenneth.Kopp@kda.ks.gov.

ENERGY POLICY

Agriculture

To learn more about commodities, or other agricultural policy issues, contact the Kansas Department of Agriculture.

Contact: Lisa Taylor at 785-296-3556 or Lisa.Taylor@kda.ks.gov.

Energy Policy and Programs

To learn more about energy efficiency and other renewable energy policy and programs, contact the Energy Programs Division of the Kansas Corporation Commission.

Contacts: Liz Brosius at 785-271-3264 or l.brosius@kcc.ks.gov.

Ray Hammarlund at 785-271-3179 or r.hammarlund@kcc.ks.gov.

Transportation Issues

To learn more, contact the Kansas Department of Transportation.

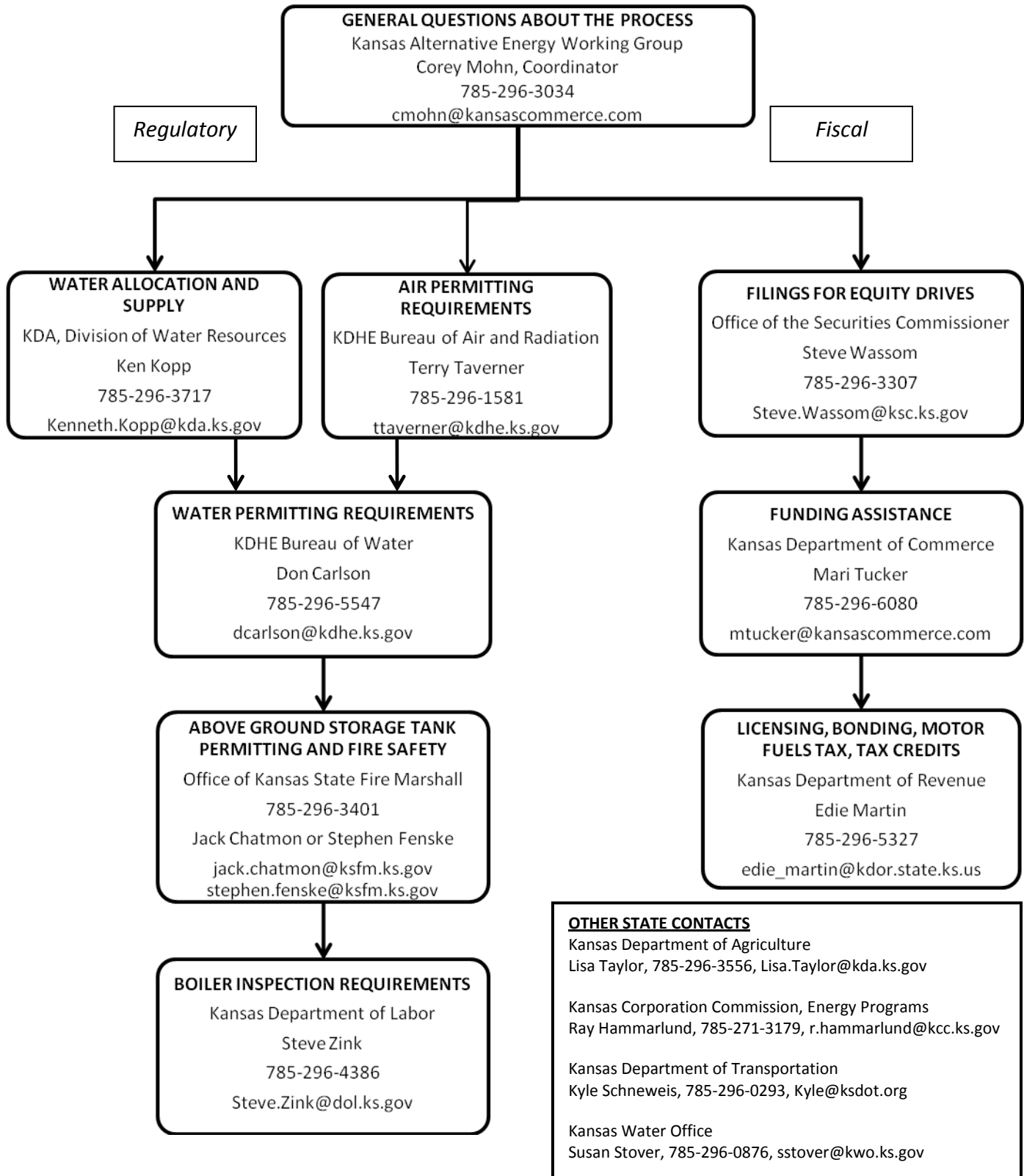
Contact: Kyle Schneweis at 785-296-0293 or Kyle@ksdot.org.

Water Policy

To learn more, contact the Kansas Water Office.

Contact: Susan Stover at 785-296-0876 or sstover@kwo.ks.gov.

Kansas Biofuel Facilities: Guide to Planning, Funding, and Regulatory Process



KANSAS ALTERNATIVE ENERGY WORKING GROUP
 c/o KANSAS DEPARTMENT OF COMMERCE – RURAL DEVELOPMENT DIVISION
 1000 SW Jackson Street, Suite 100, Topeka, Kansas 66612-1354
 Phone: (785) 296-3034 * Fax: (785) 296-3776
 TTY (Hearing Impaired): (785) 296-3487 * e-mail: cmohn@kansascommerce.com